

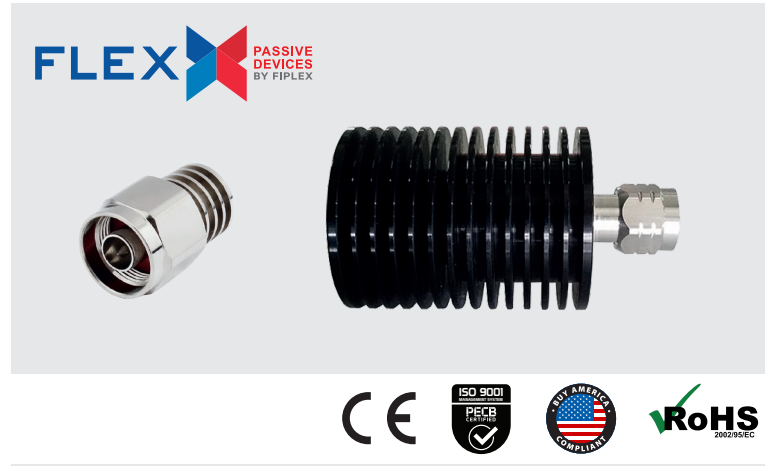
RF LOADS / TERMINATIONS

DC - 3000 MHz

LD Series

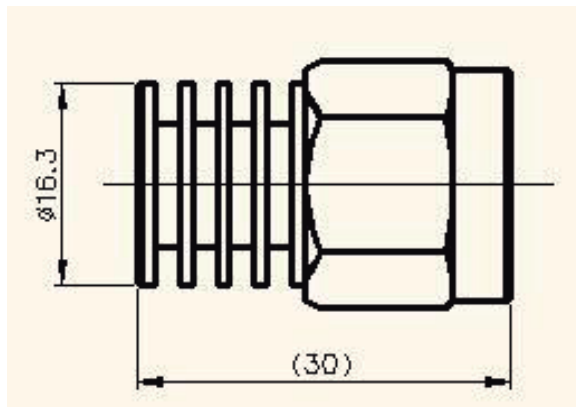
Product Features

- Passive devices designed in a coaxial configuration
- Nominal impedance is 50 ohms
- Power levels 5W and 50W
- N male type connectors as standard, other types available upon request

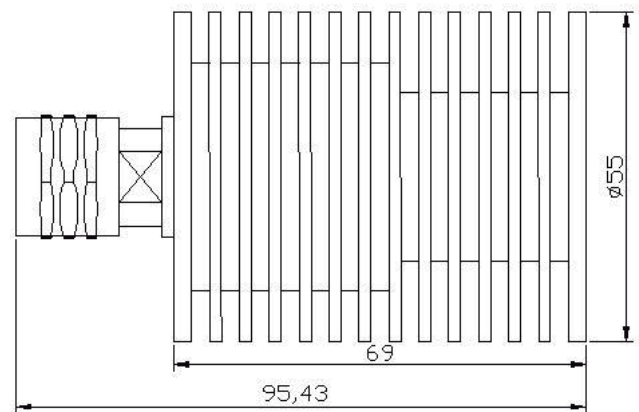


Specification	LD-05	LD-50
Frequency band	DC-3GHz	DC-3GHz
Input power	5W, CW	50W, CW
Coolant	Natural convection	Natural convection
Type	In-line, coaxial	In-line, coaxial
Impedance	50 Ω	50 Ω
VSWR	1.2:1 min	1.2:1 min
Connector	N(m)	N(m)
Temperature range	-22° to 149° F -30° to +65° C	-22° to 149° F -30° to +65° C
MTBF	>1,000,000 hours	>500,000 hours
Weight	0.17 lbs • 0.08 kg	1.1 lbs • 0.5 kg
Operating position	Any	Any

LD-05



LD-50



DOC 5C010.07 - 10202020 - DM
 Fiplex is a registered trademark of Fiplex Communications, Inc.
 Fiplex Communications, Inc. reserves the right to change specifications without prior notice.